

# RATES & FEES

## 9 HOLES

### WEEKDAY • WEEKEND

E1-E5	\$11	\$13
E6-010/DoD CIVILIAN	\$12	\$15
GUEST	\$13	\$17

## 18 HOLES

### WEEKDAY • WEEKEND

E1-E5	\$19	\$23
E6-010/DoD CIVILIAN	\$21	\$27
GUEST RECIPROCAL FEE	\$23	\$31
REPLAY (AFTER 18 HOLES)	\$17	\$19
	\$23	\$27

## ANNUAL GREENS FEES Walking Member • Riding Member

E1-E5	\$625	\$1,225
E6-010/DoD CIVILIAN	\$925	\$1,550
GUEST FAMILY	\$1,100	\$1,700
MEMBER	<b>(EACH)</b> 50% of Sponsor	

ELIGIBLE: Spouses and children (under age 18 or up to 23, if full time student)

## ADDITIONAL SERVICES

CART FEE	\$11/9 HOLE	\$20/18 HOLE
RANGE BALLS	\$6/SMALL BUCKET	\$10/LARGE BUCKET
RENTAL CLUBS	\$15	
G.H.I.N. HANDICAP	\$35/YEAR	
LESSONS-Head Pro	\$35/JUNIOR	\$60/ADULT
LESSONS- Assistant Golf Pro	\$20/JUNIOR	\$40/ADULT



## 18 HOLES CHAMPIONSHIP GOLF

Cole Park Golf Club offers an assortment of attractions for Soldiers, Retirees, Veterans and the Fort Campbell community.

Our 18-hole championship golf course has a variety of different terrains which challenge all levels of golfers from beginner to advanced.

Our experienced staff welcomes the Fort Campbell community to come out and share in the fun of the game.



1610 101st Airborne Division Road

Fort Campbell, KY 42223  
campbell.armymwr.com  
270.798.4906



Campbell.ArmyMWR.com



Pricing, Policies & Procedures

## POLICIES & PROCEDURES

---

No more than four players per group; singles and twosomes will be paired. Singles and twosomes do not have priority on the course. Each player must have their own bag and clubs. Minimum age to be on the course is seven (7) and must be accompanied by an adult guardian. You must be fifteen (15) or older in order to play unaccompanied.

### FOOD & DRINK POLICY

No outside food and beverages, including alcohol, allowed on Cole Park Golf property.

### GOLF CART POLICY

Players and guests must be at least 16 with a valid driver's license to rent or operate a golf cart. No more than two (2) riders per cart. Cart fees are charged per rider and includes non-playing riders, regardless of age.

### LOCAL RULES OF PLAY

USGA rules apply in addition to posted local rules.

White Stakes - Out Of Bounds  
Red Stakes - Lateral Water Hazard  
Yellow Stakes - Water Hazard

A ball coming to rest on or beyond Lee Road and Bastogne Avenue is out of bounds, even if it may lie on another part of the course. All measurements are to the middle of the green.

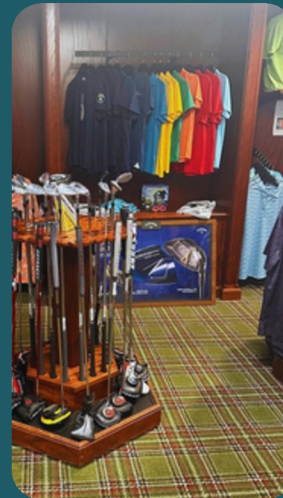
Red - 100 yards  
White - 150 yards  
Blue - 200 yards  
Gold - 250 yards

---



## Driving Range Hours

Monday	Dawn - Dusk
Tuesday	Dawn - Dusk
Wednesday	Dawn - 1pm
Thursday	10am - Dusk
Friday	Dawn - Dusk
Saturday	Dawn - Dusk
Sunday	Dawn - Dusk



## POLICIES & PROCEDURES

---

### RAIN CHECK POLICY

In the case of inclement weather, call to duty or emergencies, a rain check will be issued. The rain check will be equal to fees paid for holes not played. If the first three holes have not been played, the rain check will cover all fees.

**Rain checks will not be issued for slow play.**

### DRESS CODE POLICY

Proper attire must be worn on the grounds and on the course at all times, to show respect to the course and others.

### MEN'S DRESS CODE

Suitable golf attire is a shirt and slacks or dress shorts. Shirt must have sleeves. Military uniforms, including PTs, are not to be worn during play on the course. Cutoff pants or shirts are prohibited.

### LADIES' DRESS CODE

Suitable golf attire is sleeveless shirts with collar and dress slacks or shorts. Short shorts, halter or spaghetti strap tops, and other revealing attire is prohibited. Ladies' shirts must cover the midriff. Military uniforms are not to be worn during play.

### SHOE POLICY

Suitable footwear is athletic sneakers and spikeless golf shoes. Boots, lug sole shoes, or metal spikes are not allowed on the course.

---