

Saline Creek Trip Map



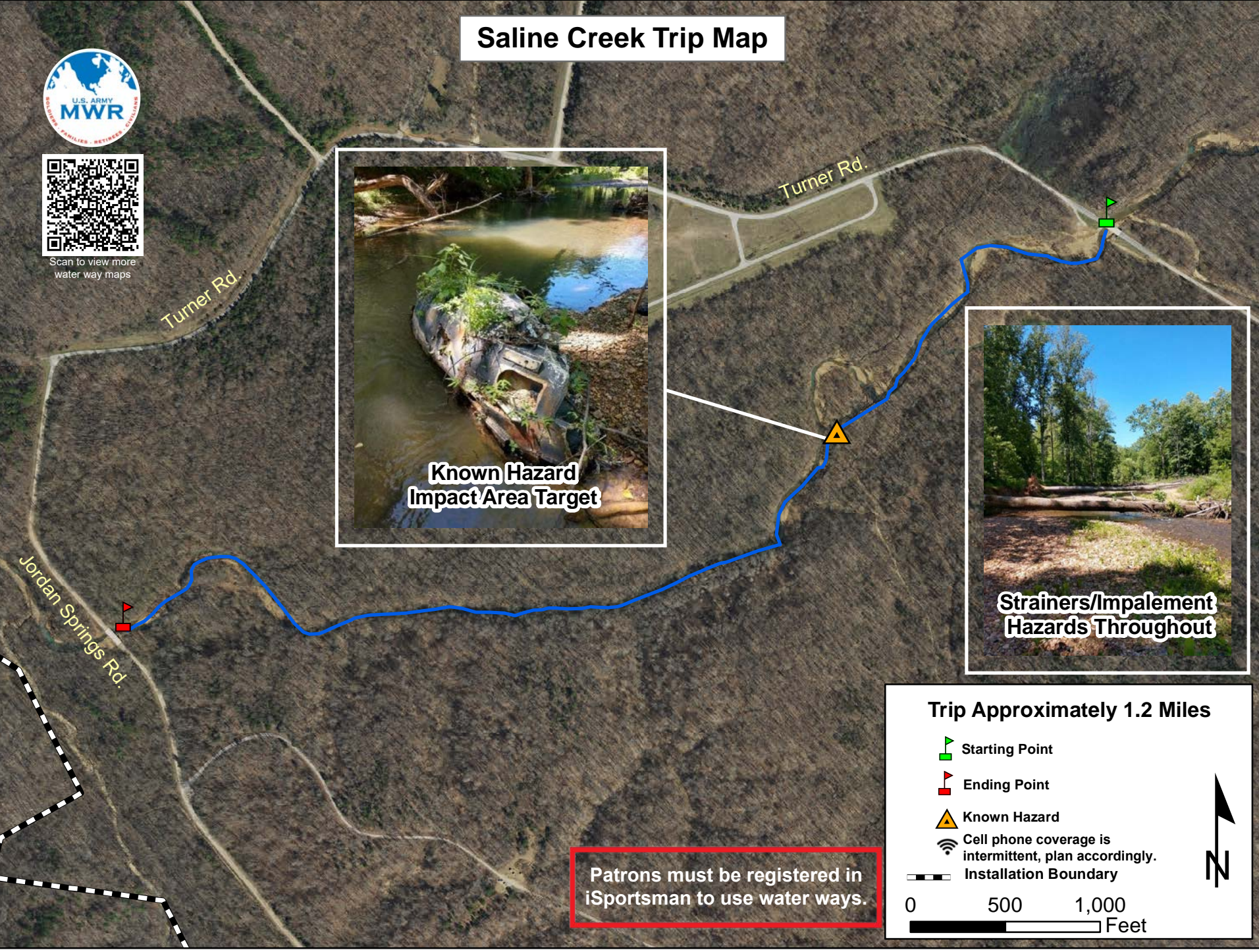
Scan to view more water way maps



**Known Hazard
Impact Area Target**



**Strainers/Impalement
Hazards Throughout**



Patrons must be registered in iSportsman to use water ways.

Trip Approximately 1.2 Miles

- Starting Point
 - Ending Point
 - Known Hazard
 - Cell phone coverage is intermittent, plan accordingly.
 - Installation Boundary
- 0 500 1,000 Feet

